

# Whitney Howler

Problem Solvers Newsletter  
Mrs. Bellafronte, Editor

## Mathematical Practices

Make sense of problems and persevere in solving them.

Reason abstractly and quantitatively.

Construct viable arguments and critique the reasoning of others.

Model with mathematics.

Use appropriate tools strategically.

Attend to precision.

Look for and make use of structure.

Look for and express regularity in repeated reasoning.

## Try Everything!

*"I won't give up, no I won't give in  
Till I reach the end  
And then I'll start again  
Though I'm on the lead  
I wanna try everything  
I wanna try even though I could fail"* – Shakira

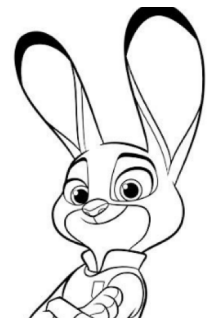
It's Problem Solving time! Shakira says it all, and "Try Everything" is our theme for this year's problem solving challenges. We will be

visiting the boroughs of Zootopia as we try to solve a variety of problems.

Judy Hopps said, *"Life's a little bit messy. We all make mistakes. No matter what type of animal you are, change starts with you."*

I challenge all of you to try everything. To do the best you can and give it your best effort. On the next page, you will find a

variety of activities to complete. Try everything for the month and you will be put into a drawing each month for some Problem Solver prizes.



## Problem Solving Prevails

### Letter from the Editor

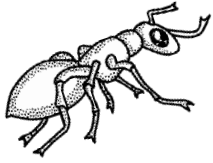
Dear Parents,  
Problem solving is a fundamental goal of any strong mathematics program. Our school is committed to making each of our students a problem solver. It is never too early or too late to develop the real life learning skills of problem solving. Our Problem Solving program helps us achieve this important goal. We will present our students with a series of math problems for them to attack and solve. The

problems will include several content areas so that all students at our school will be able to work on a part of the problem appropriate to their learning development. Trials, errors, and retries are key attributes of good problem solvers. We ask you to encourage your students to persevere. They may work with peers or siblings on these problems. The process of finding and understanding a solution outweighs the

benefit of having a correct answer.

You will play an important role in supporting your child's work on these problems. We will celebrate the students who have challenged themselves to We look forward to a partnership with you around problem solving. Thank you for supporting your child.  
Sincerely,  
Mrs. Bellafronte

## Rain forest Infested with Insects



The rain forest is a **biome** with many plants and animals. Your job is to research information about the insects of the rain forest. Try to find the largest number you can about the facts you researched. Write the number and fact on the bug shaped paper neatly with your name on the

front and the source of your information on the back. Ask yourself, how do I know that this is the biggest number? How can I tell? How can I prove that it is bigger than another number?

**Fun Fact**  
The Amazon rainforest may house as many as 2.5 million species of insects, although only a tiny fraction of this number have been described by scientists.

## Visit Zootopia

Research the weather in the boroughs of Zootopia by visiting the tourism website:

[http://visitzootopia.com/en\\_US/](http://visitzootopia.com/en_US/)

Collect the data from the daily high and low temperatures and complete the table. Write one question that you can find the answer to using the table you created.



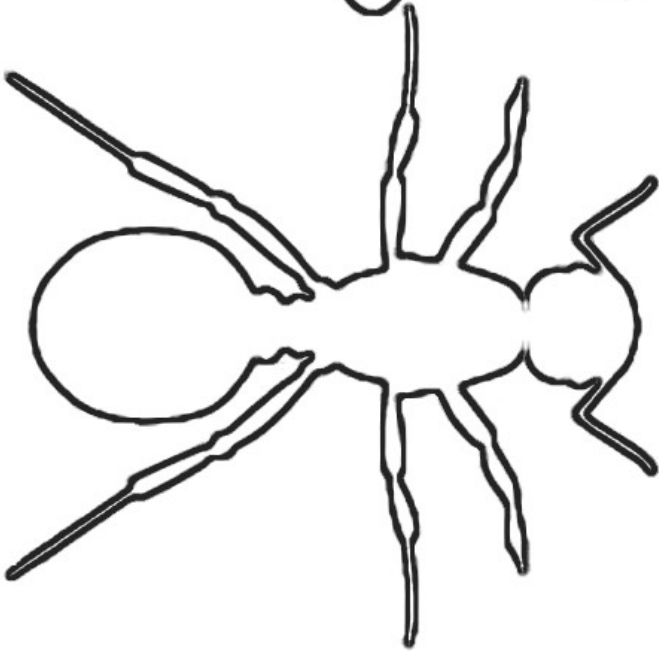
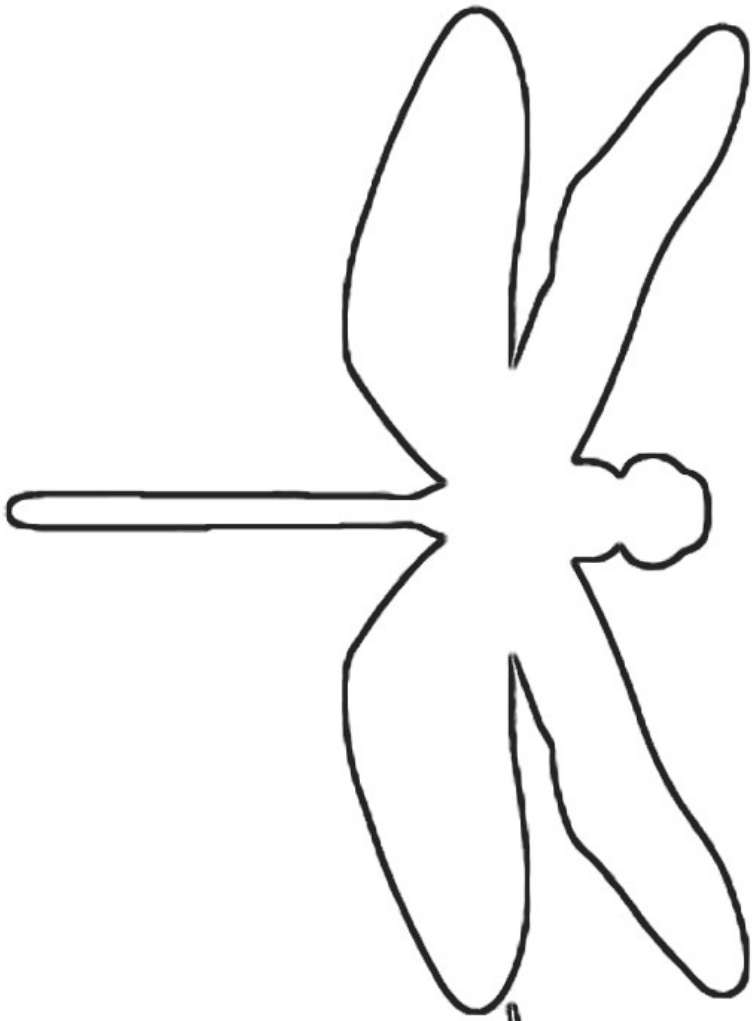
Zootopia's  
Weather  
Forecast

Borough	High temperature	Low Temperature

**Vocabulary Corner:** Match the definitions to the words found throughout this issue.

- Rain forest      a. A large community of plants and animals that occupies a distinct region.
- Biome            b. A village, town, or part of a large city that has its own government
- Borough        c. A tropical forest that receives a lot of rain and that has very tall trees

Return work with name on it to Mrs. Bellafronte in room 17 by 12/15/17 to be entered in the drawing. Stay tuned for an adventure into Tundra Town next time!



## VISIT THE RAINFOREST DISTRICT

Return work with name on it to Mrs. Bellafronte in room 17 by 12/15/17 to be entered in the drawing.  
Stay tuned for an adventure into Tundra Town next time!